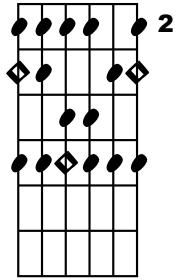
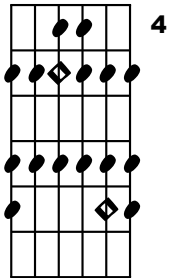


# DIATONIC MODES IN "SERIES" (DIFFERENT POSITIONS, ONE KEY)

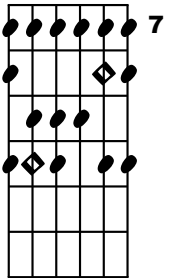
◇ = ROOT OF PARENT SCALE



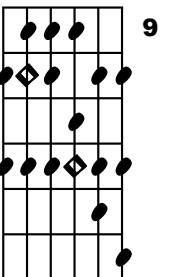
2 **G MAJOR FROM F# OR G (F# LOCRIAN OR G IONIAN)**



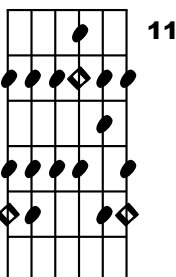
4 **G MAJOR FROM A (A DORIAN)**



7 **G MAJOR FROM B OR C (B PHRYGIAN OR C LYDIAN)**



9 **G MAJOR FROM D (D MIXOLYDIAN)**



11 **G MAJOR FROM E (E AEOLIAN)**



CONTINUE IN 12 KEYS

# DIATONIC MODES IN "PARALLEL" (DIFFERENT KEYS, ONE POSITION)

◇ = ROOT OF PARENT SCALE

1 **Db MAJOR FROM F OR Gb (F PHRYGIAN + Gb LYDIAN)**

1 **Gb MAJOR FROM F OR Gb (F LOCRIAN + Gb IONIAN)**

1 **B MAJOR FROM F# (F# MIXOLYDIAN)**

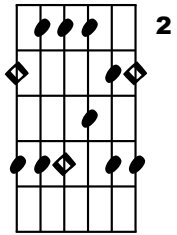
1 **E MAJOR FROM F# (F# DORIAN)**

1 **A MAJOR FROM F# (F# AEOLIAN)**

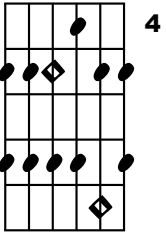
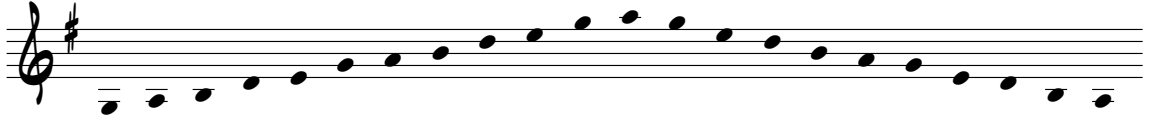
CONTINUE IN 12 POSITIONS

# MAJOR PENTATONIC MODES IN "SERIES" (DIFFERENT POSITIONS, ONE KEY)

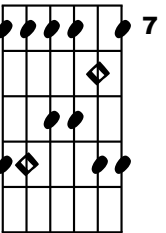
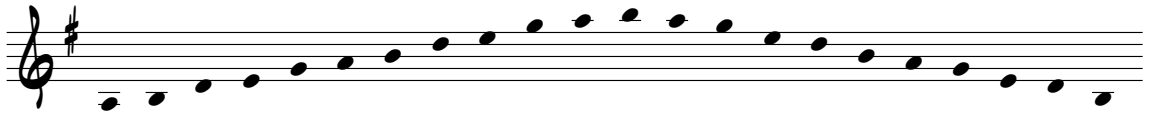
◇ = ROOT OF PARENT SCALE



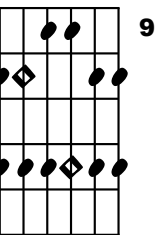
2 G MAJOR PENTATONIC FROM G



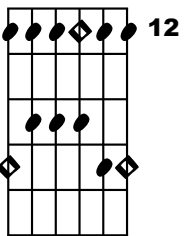
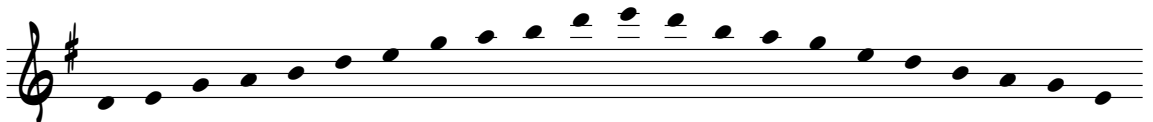
4 G MAJOR PENTATONIC FROM A



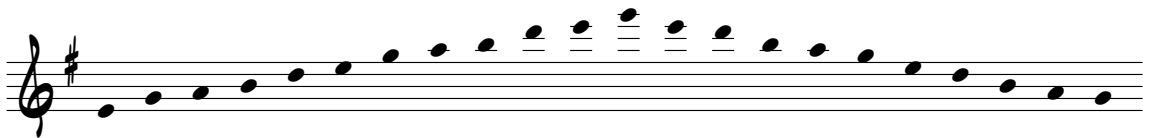
7 G MAJOR PENTATONIC FROM B



9 G MAJOR PENTATONIC FROM D



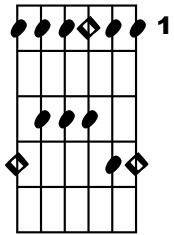
12 G MAJOR PENTATONIC FROM E



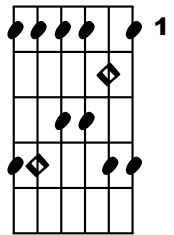
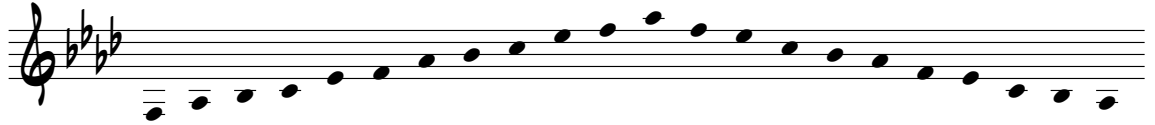
CONTINUE IN 12 KEYS

# MAJOR PENTATONIC MODES IN "PARALLEL" (DIFFERENT KEYS, ONE POSITION)

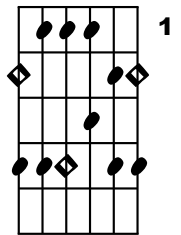
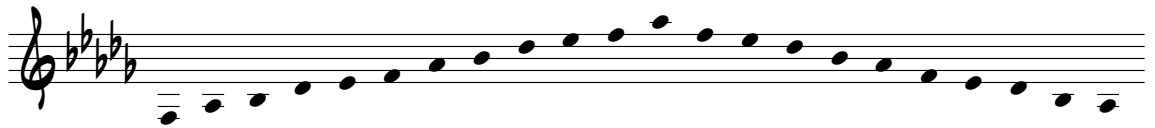
◇ = ROOT OF PARENT SCALE



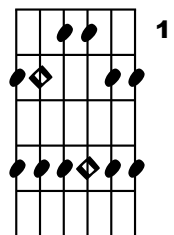
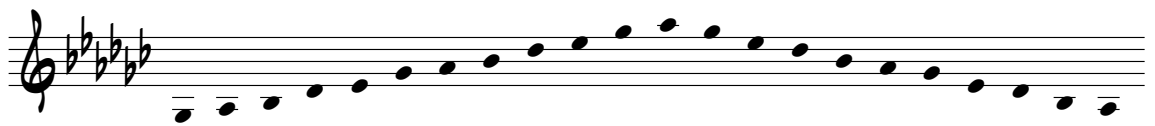
**Ab MAJOR PENTATONIC FROM F**



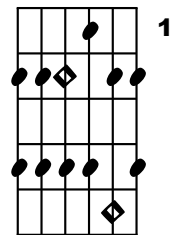
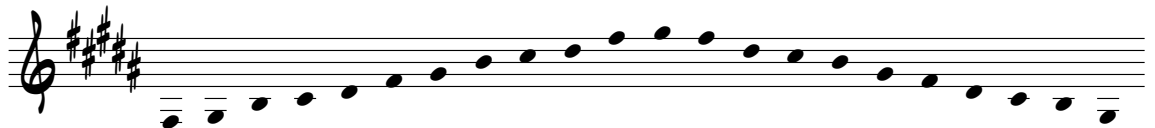
**Db MAJOR PENTATONIC FROM F**



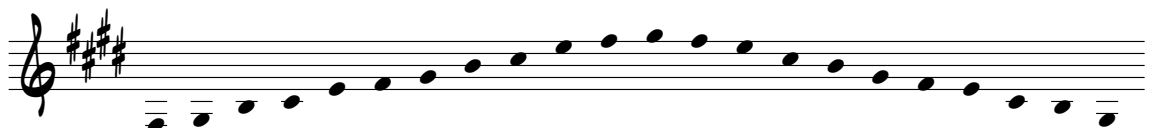
**Gb MAJOR PENTATONIC FROM Gb**



**B MAJOR PENTATONIC FROM F#**



**E MAJOR PENTATONIC FROM F#**

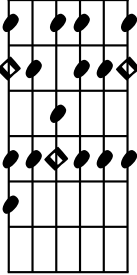
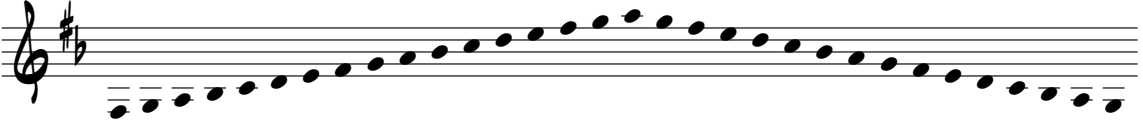


CONTINUE IN 12 POSITIONS

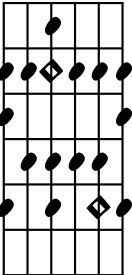

# MELODIC MINOR MODES

◇ = ROOT OF PARENT SCALE

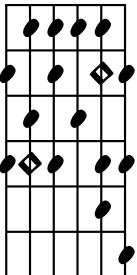

2 **G MEL. MIN. FROM F# OR G (F# ALTERED DOMINANT OR G MEL. MIN.)**

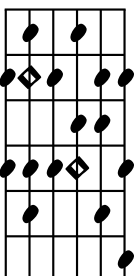

4 **G MEL. MIN. FROM A OR Bb (A DORIAN b2 OR Bb LYDIAN AUGMENTED)**

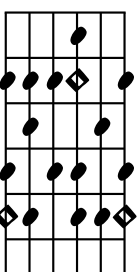

7 **G MEL. MIN. FROM C (C LYDIAN b7)**

9 **G MEL. MIN. FROM D (D MIXOLYDIAN b6)**

11 **G MEL. MIN. FROM E (E LOCRIAN b2)**

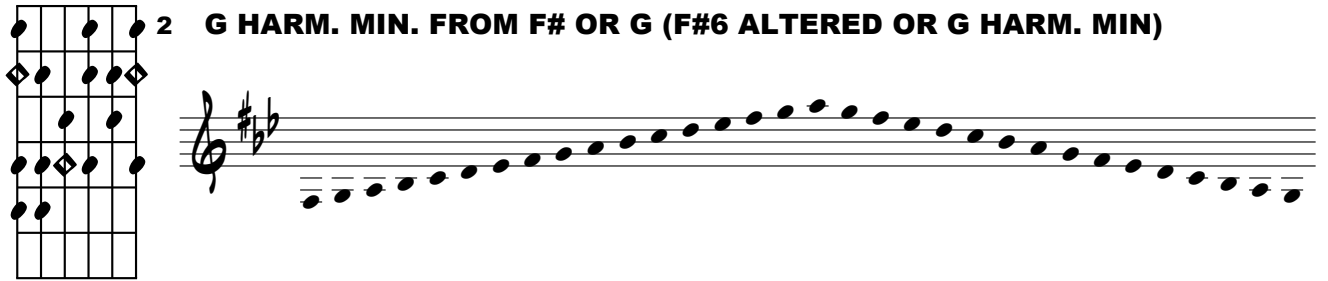



CONTINUE IN 12 KEYS

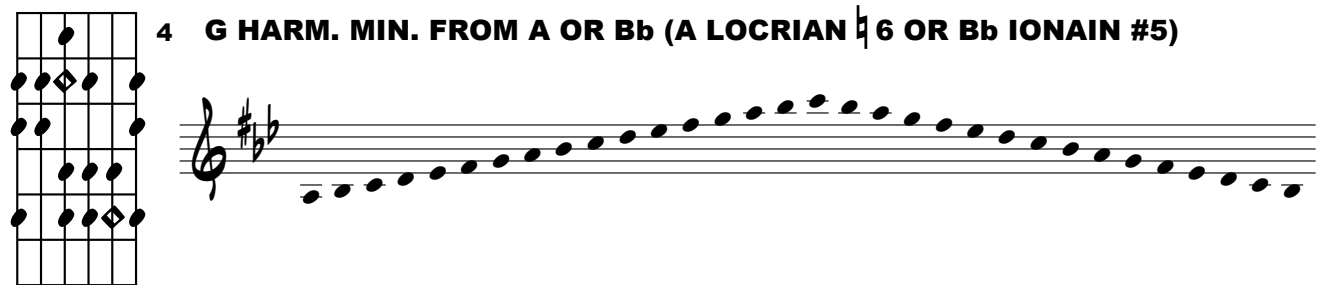
# HARMONIC MINOR MODES

◇ = ROOT OF PARENT SCALE

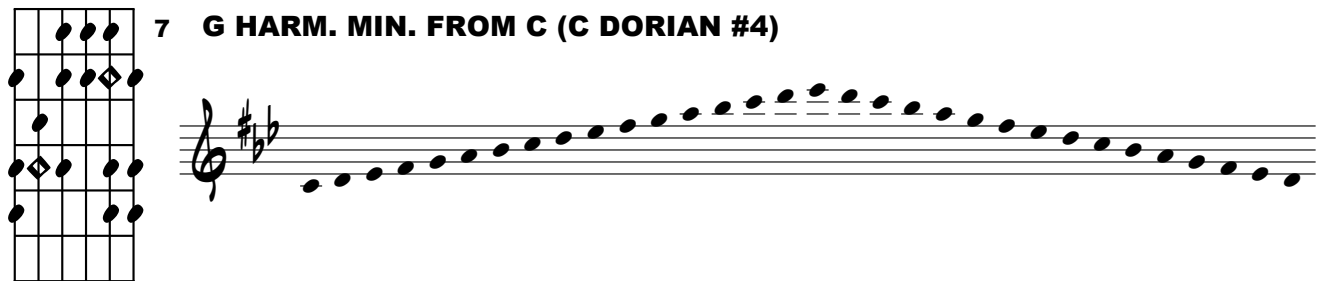
2 **G HARM. MIN. FROM F# OR G (F#6 ALTERED OR G HARM. MIN)**



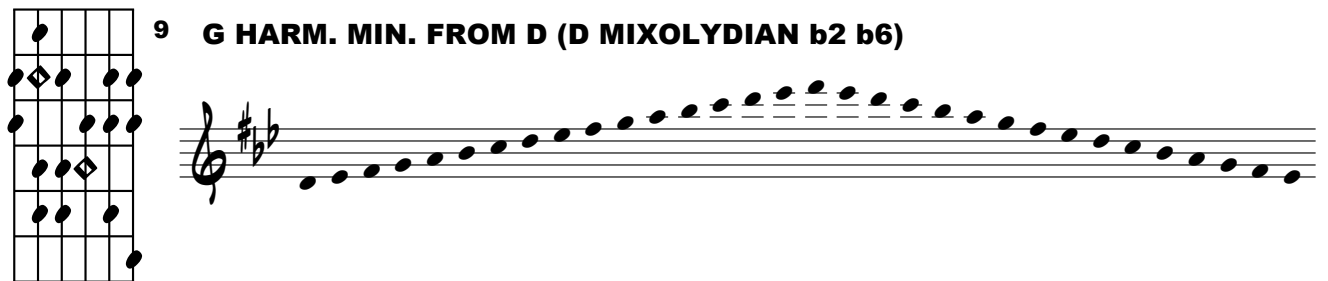
4 **G HARM. MIN. FROM A OR Bb (A LOCRIAN #6 OR Bb IONIAN #5)**



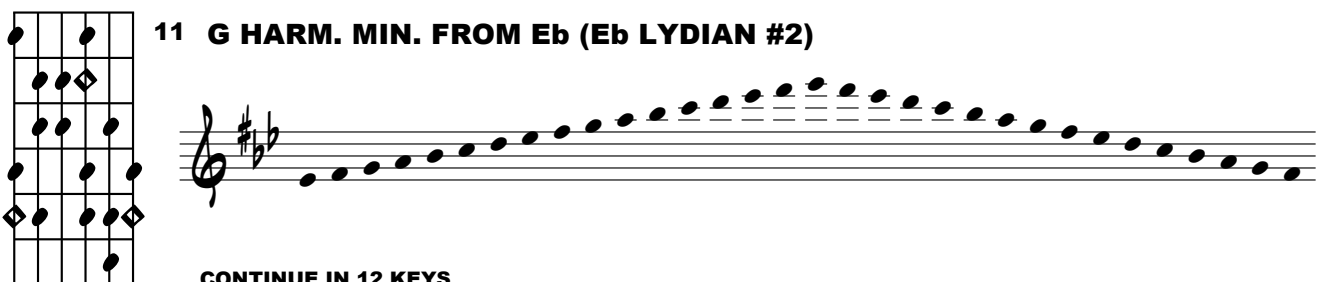
7 **G HARM. MIN. FROM C (C DORIAN #4)**



9 **G HARM. MIN. FROM D (D MIXOLYDIAN b2 b6)**



11 **G HARM. MIN. FROM Eb (Eb LYDIAN #2)**



CONTINUE IN 12 KEYS